



# Data Profile

October 2020

## Contents

### **1. Introduction**

- 1.1 The data profile
- 1.2 The Tivetshalls Neighbourhood Plan
- 1.3 Location of Tivetshall
- 1.4 Local Planning Policy

### **2. Community infrastructure**

- 2.1 Population
- 2.2 Health and well-being
- 2.3 Qualifications
- 2.4 Deprivation
- 2.5 Services, facilities and utilities
- 2.6 Social and cultural

### **3. Housing and the built environment**

- 3.1 Historic environment
- 3.2 Housing

### **4. Transport and access**

- 4.1 Public transport
- 4.2 Traffic
- 4.3 Cycling and walking
- 4.4 Car ownership and travel to work

### **5. Environment and landscape**

- 5.1 Landscape character
- 5.2 Biodiversity and geodiversity
- 5.3 Land, soil and water resources
- 5.4 Rivers and flooding

### **6. Business and employment**

- 6.1 Employment

# 1. Introduction

## 1.1 The data profile

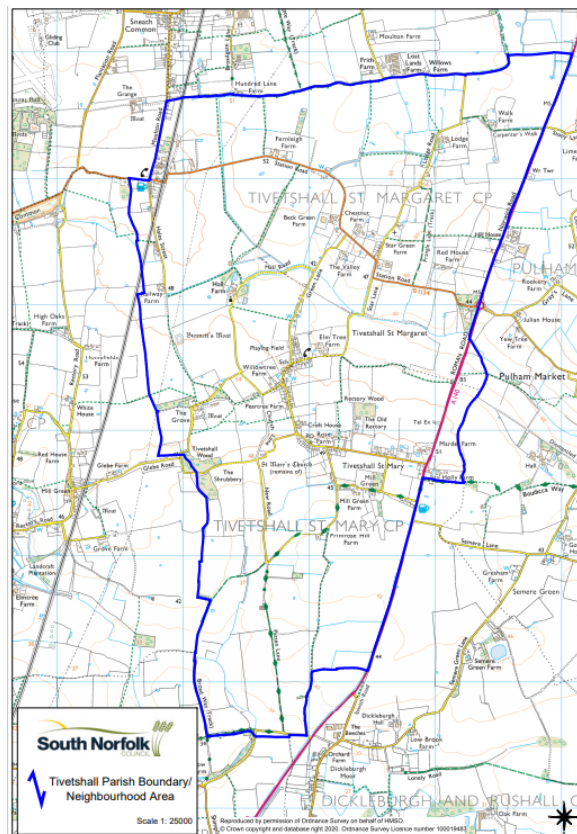
1.1.1 This data profile has been developed to form part of the evidence base for The Tivetshalls Neighbourhood Plan.

1.1.2 The Tivetshalls Neighbourhood Plan is currently being developed as a Neighbourhood Development Plan under the Localism Act 2011 and the Neighbourhood Planning (General) Regulations 2012. The Neighbourhood Plan is being prepared in the context of the adopted South Norfolk Local Plan and the emerging Greater Norwich Local Plan.

## 1.2 The Tivetshalls Neighbourhood Plan

1.2.1 In July 2020, Tivetshall Parish Council submitted a Neighbourhood Area application. The designated area is the whole civil parish and, in accordance with Regulation 5A of the 'Town and Country Planning, England - Neighbourhood Planning (General) Regulations 2012', South Norfolk Council confirmed the designation. The designated Neighbourhood Plan boundary can be seen in Figure 1 below.

**Figure 1 below: Map showing The Tivetshalls Neighbourhood Plan area boundary.  
Source: South Norfolk Council. Map obtained 16.09.2020.**



1.2.2 The Neighbourhood Plan Steering Group drafted a Vision, Aims and Objectives at a workshop on 19<sup>th</sup> September 2020. These will be amended if necessary following consultation with the community.

1.2.3 The draft Neighbourhood Plan aims are to:

- Enable residents to influence and shape new development.
- Allow the village to develop sensitively, in terms of design, local linear character, heritage, amenities, and the environment.
- Establish what is special about Tivetshall.
- Identify community needs for the use of developer contributions and other possible funds.

1.2.4 The draft Neighbourhood Plan Vision for 2042 is:

Tivetshall parish will be a community with a range of housing types and tenures to suit all ages, supported by good village amenities. Development will be sustainable, appropriately located, be well designed and fit within the linear character of the parish, whilst ensuring the protection of green spaces, the natural environment and local heritage. Tivetshall will continue to be a desirable place to live work and visit for current and future generations.

1.2.5 The draft Neighbourhood Plan Objectives are:

**Community Infrastructure**

1. To enable a range of suitable amenities to benefit all ages in the community.

**Housing and the Built Environment**

2. To support a range of development that is well-designed and suitably located, which complements the character of the Tivetshalls.

**Transport and Access**

3. To encourage safe and integrated routes and parking for all users.

**Environment and Landscape**

4. To protect and enhance the green and open character of the parish.

**Business and Employment**

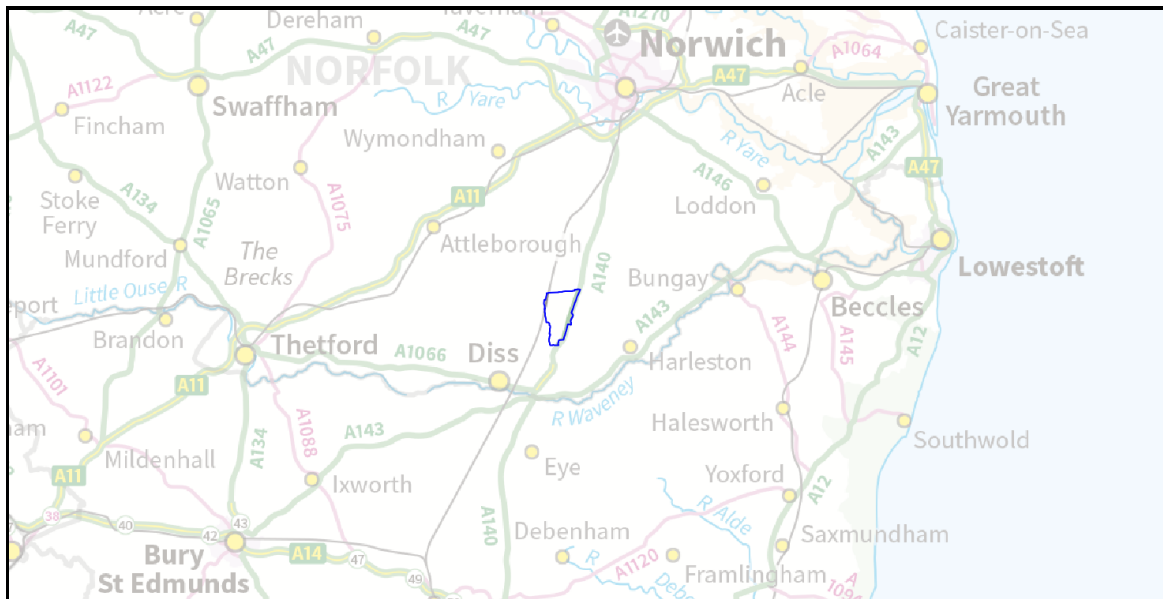
5. To support appropriate new and existing businesses and employment.

1.2.6 This data profile is set out in sections based on the draft Neighbourhood Plan objectives.

### **1.3 Location**

1.3.1 The parish of Tivetshall is made up of two communities, Tivetshall St. Margaret and Tivetshall St. Mary. The villages are located in Dickleburgh Ward of South Norfolk district, 7 miles from the Suffolk border and are located between the A140 and B1134 roads.

**Figure 2 below: Map showing the location of Tivetshall parish.**  
**Source: Parish Online mapping website, 30.09.2020, location denoted by blue outline.**

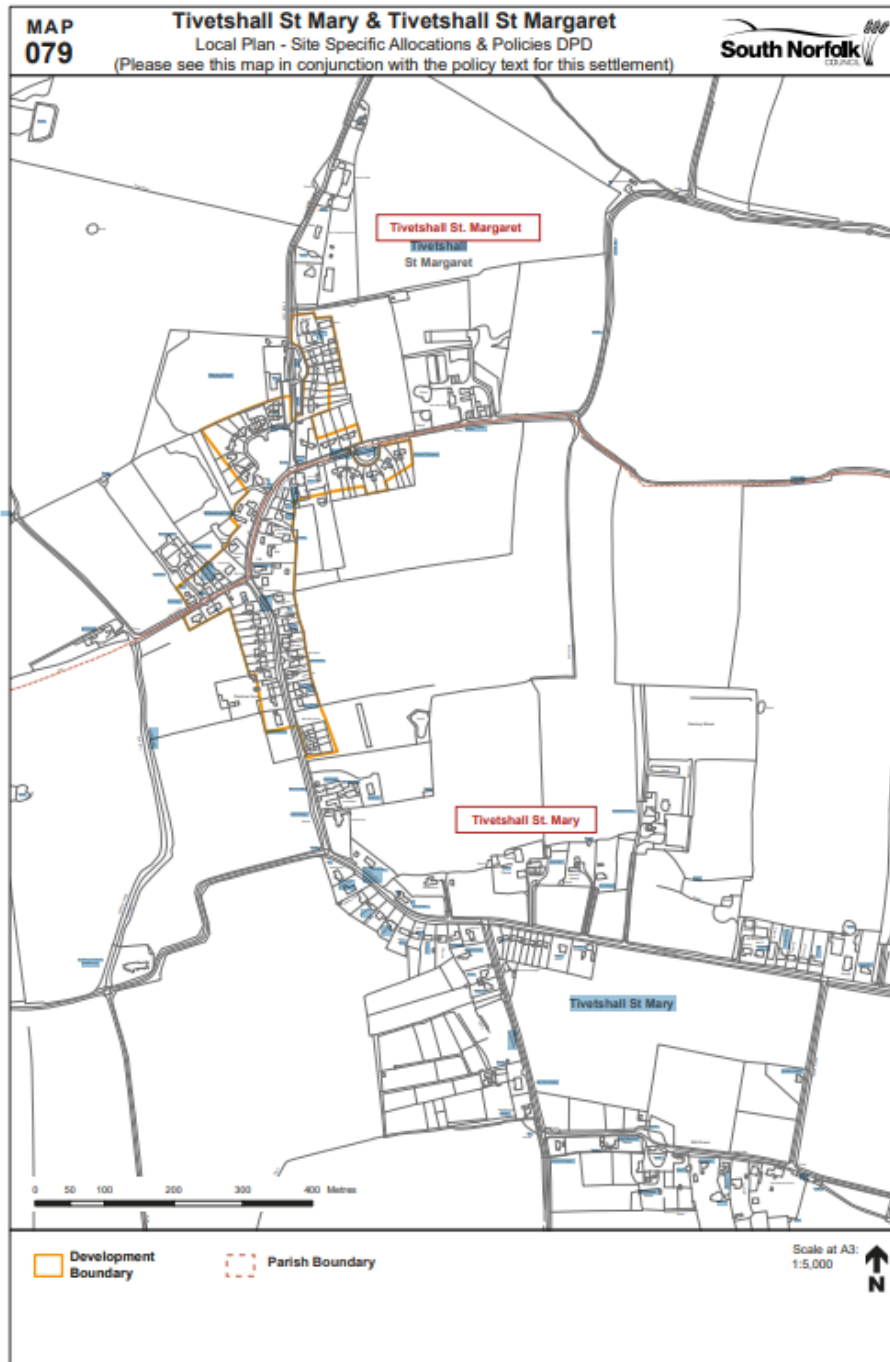


## 1.4 Local Planning Policy

- 1.4.1 Strategic planning policy for the South Norfolk Council area is currently provided by the Greater Norwich Development Partnership Joint Core Strategy (2014) which sets out the strategy for growth in Norwich, Broadland and South Norfolk up to 2026.
- 1.4.2 Tivetshall St. Mary and Tivetshall St. Margaret are identified as 'Other Villages' in Policy 16 of the Joint Core Strategy. As such, they have defined development boundaries within which very limited infill development can occur without affecting the form and character of the villages.
- 1.4.3 The Site-Specific Allocations and Policies Document is part of the South Norfolk Local Plan. Guided by the Joint Core Strategy, it designates areas of land to deliver housing, employment, recreation, open spaces and community uses. Together with the other documents that make up the Development Plan it is used to assess planning applications and guide development proposals to ensure the delivery of high-quality sustainable developments across South Norfolk. The document was formally adopted on 26 October 2015 and covers the period up to 2026.
- 1.4.4 The development boundary for Tivetshall has been drawn around the existing built-up area where the two parishes meet. It has been drawn in order to maintain the physical separation between the two built up areas to the south of The Street to prevent further extension of development into the surrounding countryside whilst allowing for limited infill development within it. Outlying areas, further from facilities

have been excluded from the defined development boundary.<sup>12</sup> The map showing the development boundary can be seen in Figure 3 below.

**Figure 3 below: Tivetshall St. Mary and Tivetshall St. Margaret Map 79.**  
**Source: Local Plan – Site Specific Allocations and Policies Development Plan Document.**



1.4.5 The Greater Norwich Local Plan (GNLP) is currently being developed and will build on the long-established joint working arrangements for Greater Norwich, which have

<sup>1</sup> Appendix B5 – South Norfolk Site Specific Allocations and Policies Document (Section 6 – 7)

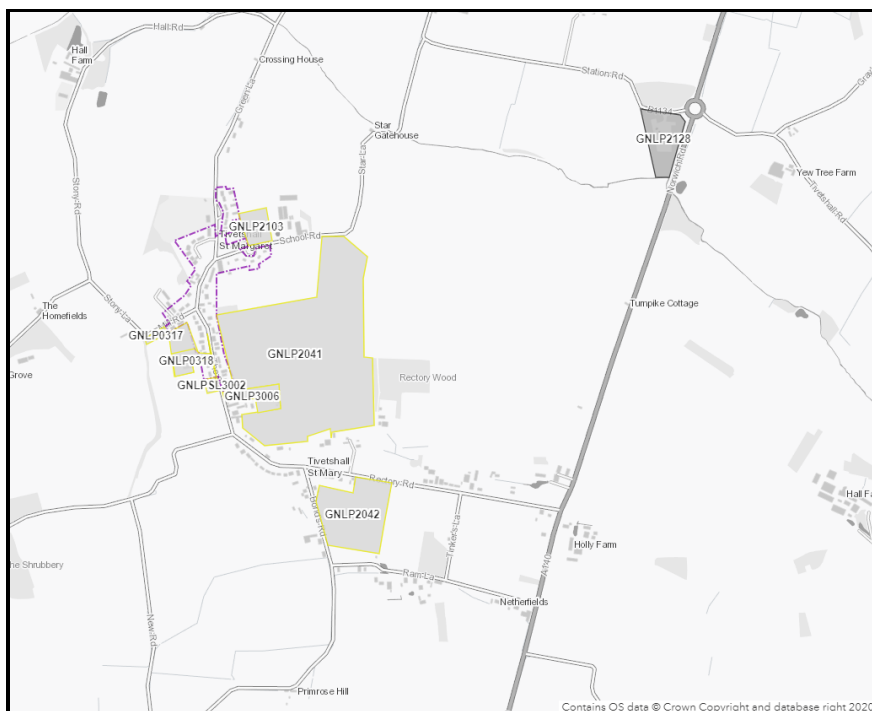
delivered the current Joint Core Strategy for the area. The Joint Core Strategy plans for the housing and jobs needs of the area to 2026 and the GNLP will ensure that these needs continue to be met to 2038.

- 1.4.6 The GNLP will include strategic planning policies and allocate sites for development. It will aim to ensure that new homes and jobs are delivered, and the environment is protected and enhanced, promoting sustainability and the effective functioning of the area.
- 1.4.7 South Norfolk parishes have been divided up into 48 different clusters, based on primary school catchments, for the purposes of developing the South Norfolk Village Clusters Housing Allocations Document, being undertaken by South Norfolk Council. This will include sites for a minimum of 1,200 new homes (in addition to the 1,349 already committed in the identified cluster areas). If the new housing requirement was spread equally, this would mean finding sites for an average of 25 new homes per cluster. However, factors such as local infrastructure will play a key part in determining how the development is spread between the village clusters. At the time of writing, the sites being considered for inclusion for the potential 25 houses for the Tivetshalls cluster can be seen on the map in Figure 4 below.

**Figure 4 below: Map showing sites being considered for allocation in the Tivetshalls Village Cluster Plan.**

**Source: Greater Norwich Local Plan Regulation 18 Draft Plan website 08.10.2020.**

<http://norfolkcc.maps.arcgis.com/apps/webappviewer/index.html?id=551020612db74e94a73c135935a7114d>



- 1.4.8 Sites originally promoted for consideration by the GNLP have been transferred to the Village Cluster Plan team for assessment and are being considered alongside new

sites promoted at the start of 2020. The site selection criteria is based upon the original GNLP assessment criteria but has been updated to reflect the village cluster settings, reflecting better the rural nature of the South Norfolk District. The aim is to have a draft 'preferred options' document available for public and stakeholder consultation by February/March 2021. At the time of writing, the sites being considered are:

GNLP2041

GNLP3006

GNLP2042

GNLP3002

GNLP0318

GNLP0319

GNLP0317

GNLP2128 shown on the map has been assessed as an unreasonable site.

- 1.4.9 The 'Planning for the Future' White Paper (August 2020) is currently out for consultation. The changes to the planning system proposed in the White Paper may impact on the development of the GNLP and The Tivetshalls Neighbourhood Plan.



## 2. Community Infrastructure

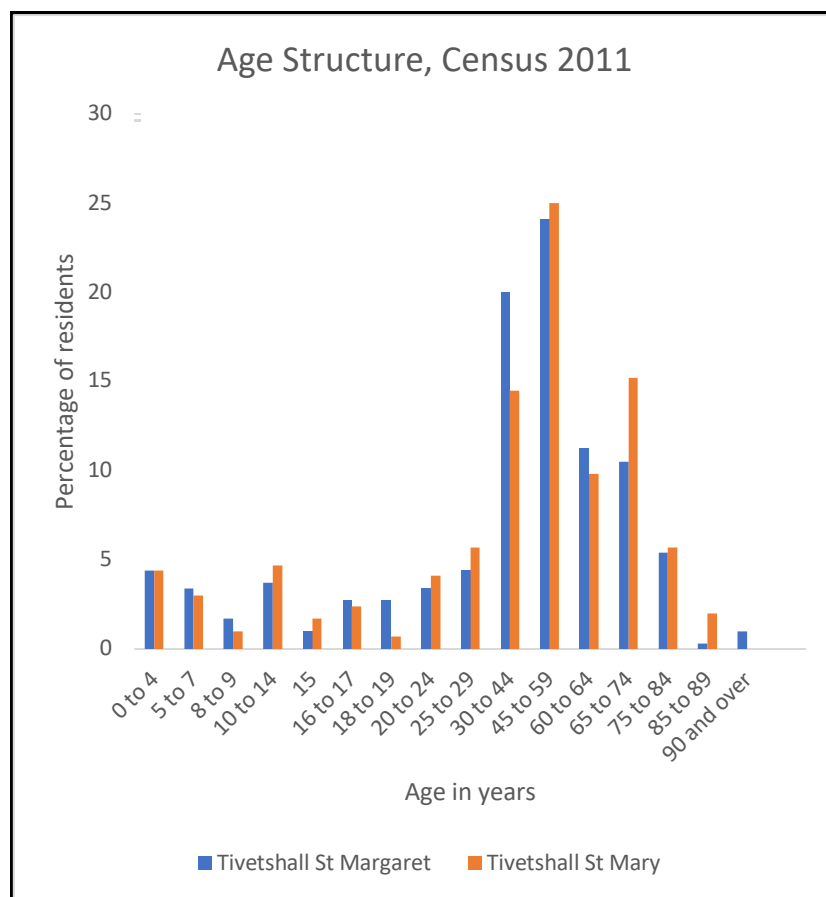
All Census data throughout the data profile is 2011 Census data obtained from [www.nomisweb.co.uk](http://www.nomisweb.co.uk) on 24.09.2020 unless referenced otherwise. In brackets throughout, are references to the tables downloaded from the Nomis website that contain the relevant Census information. For example, (KS101EW) is the table for Usual Resident Population.

### 2.1 Population

- 2.1.1 The usual resident population of Tivetshall was 591. This data is from a population of 295 in Tivetshall St. Margaret and 296 in Tivetshall St. Mary.
- 2.1.2 The population of Tivetshall St. Margaret (KS101EW) was 50.5% male and 49.5% female. The population of Tivetshall St. Mary was 46.6% male and 53.4% female.
- 2.1.3 The age structure of Tivetshall St. Margaret and Tivetshall St. Mary is shown in the graph overleaf.

**Figure 5 overleaf: Age structure of the population of Tivetshall St. Margaret and Tivetshall St. Mary.**

**Source: [www.nomisweb.co.uk](http://www.nomisweb.co.uk) Data obtained 02.10.2020.**



## 2.2 Health and wellbeing

2.2.1 The table below shows how residents reported their health in the 2011 Census (KS310EW) compared to South Norfolk and Norfolk.

**Figure 6 below: Table showing how residents of Tivetshall St. Margaret and Tivetshall St. Mary reported their health in the 2011 Census.**

Source: [www.nomisweb.co.uk](http://www.nomisweb.co.uk) data obtained 02.10.2020

Area	Very good health	Good health	Fair health	Bad health	Very bad health
<b>Tivetshall St. Margaret</b>	49.8%	36.3%	10.2%	2.4%	1.4%
<b>Tivetshall St. Mary</b>	43.6%	39.2%	11.8%	4.7%	0.7%
<b>South Norfolk District</b>	46.4%	35.8%	13.4%	3.5%	1.0%
<b>Norfolk</b>	42.7%	36.6%	15.1%	4.4%	1.1%

- 2.2.2 The table below shows how residents reported how limited their day-to-day activities were in the 2011 Census (KS301EW) compared to South Norfolk and Norfolk.

**Figure 7 below: Table showing how residents of Tivetshall St. Margaret and Tivetshall St. Mary reported their day-to-day activity affected by health in the 2011 Census.**

Source: [www.nomisweb.co.uk](http://www.nomisweb.co.uk) data obtained 02.10.2020.

Area	Day-to-day activities limited a lot	Day-to-day activities limited a little	Day-to day activities not limited
<b>Tivetshall St. Margaret</b>	5.8%	10.2%	84.1%
<b>Tivetshall St. Mary</b>	7.8%	8.8%	83.4%
<b>South Norfolk District</b>	7.4%	10.5%	82.1%
<b>Norfolk</b>	9.1%	11.0%	79.9%

## 2.3 Qualifications

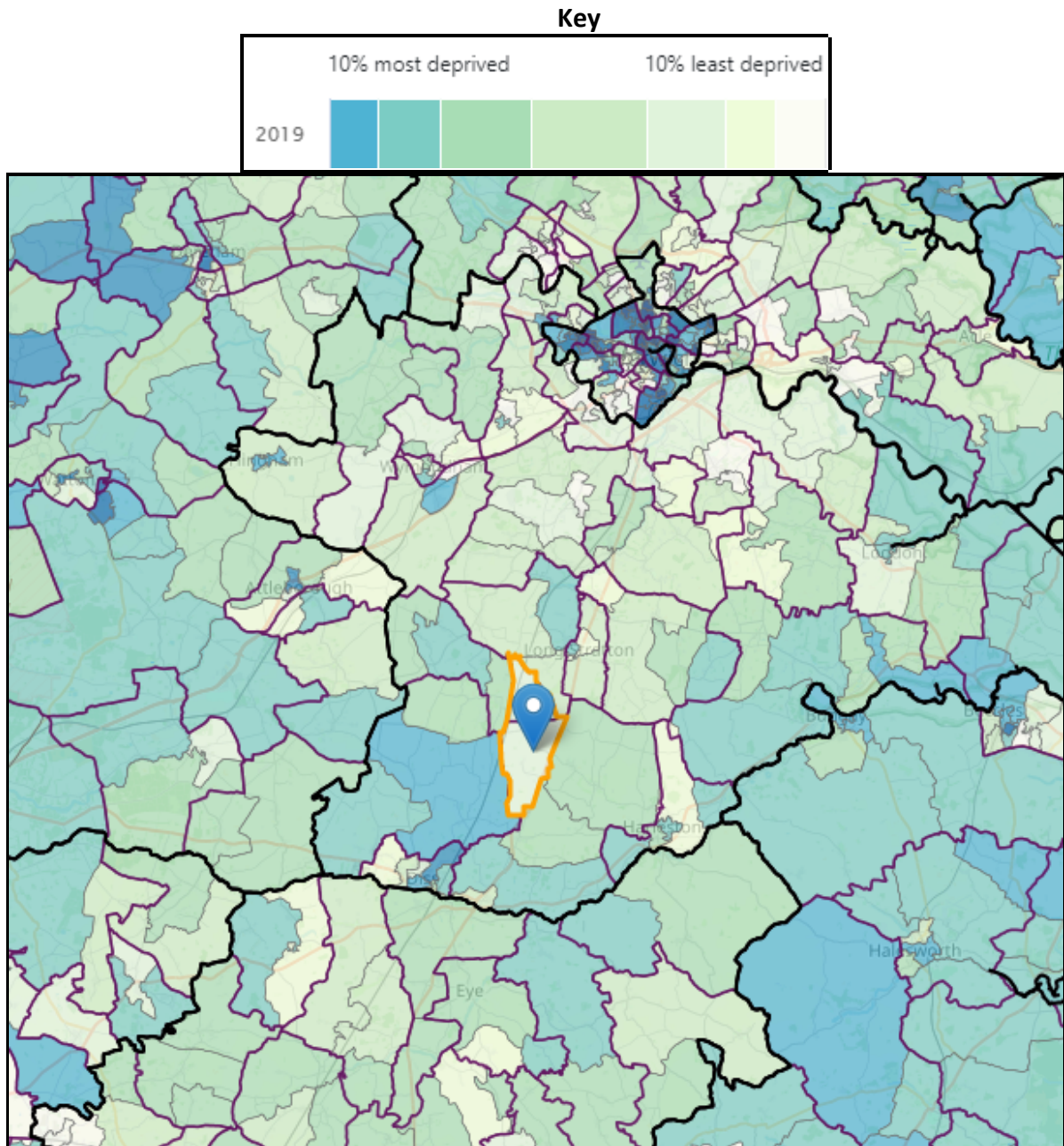
- 2.3.1 Data from the 2011 Census (KS501EW) shows that 24.9% of usual residents in Tivetshall St. Margaret and 27.8% of usual residents in Tivetshall St. Mary aged 16 and over have no qualifications. This compares to 22.6% in South Norfolk and 26.3% in Norfolk.

## 2.4 Deprivation

- 2.4.1 Tivetshall parish is located in the Lower Layer Super Output Area (LSOA) South Norfolk 014C and contains the parishes of Tivetshall and Great Moulton. A LSOA is a geographical area.

Figure 8 below: Map showing the area of LSOA 014C including the area of Tivetshall.

Source: [http://dclgapps.communities.gov.uk/imd/iod\\_index.html](http://dclgapps.communities.gov.uk/imd/iod_index.html) map obtained 02.10.2020.



2.4.2 In the Indices of Multiple Deprivation 2019, this LSOA was ranked 18,214 out of 32,844 LSOAs in England, where 1 is the most deprived LSOA. This is amongst the 50% least deprived neighbourhoods in the country. In 2015, this LSOA was ranked 23,082 out of 32,844, amongst the 30% least deprived neighbourhoods.

2.4.5 The Indices of Multiple Deprivation are made up of seven domains. In 2019 this LSOA was amongst the:

- 30% least deprived neighbourhoods for Income Deprivation.

- 30% least deprived neighbourhoods for Employment Deprivation.
- 50% least deprived neighbourhoods for Education, Skills and Training.
- 40% least deprived neighbourhoods for Health, Deprivation and Disability.
- 10% least deprived neighbourhoods for Crime.
- 10% most deprived neighbourhoods for Barriers to Housing and Services. This measures the physical and financial accessibility of housing and local services.
- 30% most deprived neighbourhoods for Living Environment Deprivation.
- 30% least deprived neighbourhoods for Income Deprivation Affecting Children.
- 30% least deprived neighbourhoods for Income Deprivation Affecting Older People.

## 2.5 Services, Facilities and Utilities

- 2.5.1 Within the parish of Tivetshall there is a village post office and two public houses, which are The Old Ram in Tivetshall St. Mary and The Railway Tavern in Tivetshall St. Margaret. The Railway Tavern was registered as an Asset of Community Value in 2018 but is currently not trading.
- 2.5.2 Tivetshall Primary School takes children aged 4 – 11 years and is on School Road in Tivetshall St. Mary. The primary school had 14 pupils on roll in January 2020 with 7 planned admissions in 2020/2021 and 7 planned admissions 2021/22.<sup>3</sup> Tivetshall Primary School feeds to Diss High School. The primary school is part of Sapientia Trust.
- 2.5.3 There is no medical practice in Tivetshall. The nearest Doctors surgery is in Pulham Market. There are also nearby surgeries in Long Stratton and Diss.
- 2.5.4 There is a modern Village Hall in Tivetshall St. Mary with a playing field containing play equipment for children and football goals. The capacity of the Village Hall is 150 seated and 200 standing. There are two weekly bookings, which are pilates and indoor bowls. The Area Scouts committee hold quarterly meetings at the Village Hall and other bookings include adult and children's celebration parties, psychic evenings, the annual school play, craft fairs, a twice monthly pop up cafe, the biennial village fete and funeral wakes. There is availability for further group bookings.
- 2.5.5 The Village Hall committee have recently altered the stage to create much more storage as requested by groups wanting to book the hall. The Village Hall committee asked via Facebook what improvements residents would like and are currently applying for grants to totally refit and reorganise the kitchen and bar area. Fire regulations mean currently not able to cook on site and there are longer term intentions for a garden room extension overlooking the playing field.

---

<sup>3</sup> [www.norfolk.gov.uk/schoolfinder](http://www.norfolk.gov.uk/schoolfinder) data obtained 05.10.2020

- 2.5.6 The playing field and play equipment is very well used. Parents using the Village Hall car park for the school run often take their children to the playing field after school.
- 2.5.7 St. Margaret's Church holds church services and flower festivals, and remembrance service and wreath laying by village groups. The St. Marys Church ruins holds a service and wreath laying on 11 November or nearest school day, which the school children are involved in. It is still used for the internment of ashes and also for photo shoots including wedding pictures.
- 2.5.8 Meetings have been held in the school building when the Village Hall has been unavailable.
- 2.5.9 Land owned by the Parish Council includes the Village Hall, car park and the surrounding land from the boundary with Green Lane to the football goal posts on the playing field. The Parish Council owns the village green between Green Lane and Thwaites Close, which was a S106 purchase from development of Thwaites Close.
- 2.5.10 The Parish Council discussed a formal application in September 2020 from a group of residents for provision of a site for allotments. The Village Hall was built on the site of the former allotments 23 years ago. A site near the Village Hall would be ideal but the Parish Council do not own any suitable land.
- 2.5.11 Suitable broadband provision has been a long-standing problem in Tivetshall parish. B4RN is a professionally designed fibre optic broadband network, registered as a non-profit community benefit society, and run by a dedicated local team with the support of landowners and volunteers. B4RN offers hyperfast (1,000Mbps) Fibre To The Home broadband to every property in the coverage areas, costing households £30 per month. Every customer gets a router with a 1000M connection to the internet – both upload and download. Tivetshall was one of the first communities in East Anglia to decide to get good broadband and start work.<sup>4</sup> The team have now connected 50 houses and the rest should be connected this year. There is broadband provision near the potential GNLP site allocations, so any new development can be connected to the B4RN network.

---

<sup>4</sup> [www.b4sn.co.uk](http://www.b4sn.co.uk) 08.10.2020

### 3. Housing and the Built Environment

#### 3.1 Historic Environment

- 3.1.1 The name Tivetshall is derived from the Old English for ‘lapwing’s nook’. To the east the parish is bounded by route of the Roman Pye Road, now the A140, and to the west the boundary runs close to the railway line from Norwich to Diss, which once served the nearby village. The Domesday Book identifies two churches in Tivetshall, and it is assumed that this refers to the church of St. Mary’s and the church of St. Margaret. Today St Mary’s lies largely ruined, the result of its isolated situation away from the present village and a sonic boom from an early jet plane which caused the fall of the church tower in 1947. However, there is evidence that the present building was begun as early as the 12<sup>th</sup> or 13<sup>th</sup> century, and a medieval chalice has been recovered from the grounds.<sup>5</sup>

**Figure 9 below: Photograph of St. Mary’s Church.**

**Source: [www.norfolkchurches.co.uk](http://www.norfolkchurches.co.uk) (copyright S.Knott).**



- 3.1.2 The disused railway station lies about 1.4km north west from the Church of St. Margaret.<sup>6</sup> The railway station served the Waveney Valley line linking Tivetshall Station with Bungay. Work began in 1851 and the railway closed in 1966 due to the rapid increase in road transport.
- 3.1.2 Historic England lists 34 records for Tivetshall. 16 records are in Tivetshall St. Mary and 18 records are in Tivetshall St. Margaret. The Church of St. Margaret is a Grade I listed building and the Remains of the Church of St. Mary is a Grade II\* listed building. Below is a list of Listed Buildings in the parish.

<sup>5</sup> [www.heritage.norfolk.gov.uk](http://www.heritage.norfolk.gov.uk) 25.09.2020

<sup>6</sup> Tivetshall, Reminiscences of the past, Tivetshall School, 1977

#### Tivetshall St. Mary War Memorial

- List Entry Number: 1456666
- Heritage Category: Listing
- Grade: II
- Location: Churchyard of St Mary's Church, Gissing Road, Tivetshall St. Mary, Norfolk, NR15 2AL, Tivetshall St. Mary, South Norfolk, Norfolk

#### REMAINS OF CHURCH OF ST MARY

- List Entry Number: 1372995
- Heritage Category: Listing
- Grade: II\*
- Location: REMAINS OF CHURCH OF ST MARY, CHURCH LANE, Tivetshall St. Mary, South Norfolk, Norfolk

#### THE LAURELS

- List Entry Number: 1050814
- Heritage Category: Listing
- Grade: II
- Location: THE LAURELS, RAM LANE, Tivetshall St. Mary, South Norfolk, Norfolk

#### BARN IMMEDIATELY NORTH-EAST OF MARDEL FARMHOUSE

- List Entry Number: 1372996
- Heritage Category: Listing
- Grade: II
- Location: BARN IMMEDIATELY NORTH-EAST OF MARDEL FARMHOUSE, NORWICH ROAD, Tivetshall St. Mary, South Norfolk, Norfolk

#### THE COTTAGE

- List Entry Number: 1179818
- Heritage Category: Listing
- Grade: II
- Location: THE COTTAGE, LONG ROAD, Tivetshall St. Mary, South Norfolk, Norfolk

#### CROFT HOUSE

- List Entry Number: 1050817
- Heritage Category: Listing
- Grade: II
- Location: CROFT HOUSE, THE STREET, Tivetshall St. Mary, South Norfolk, Norfolk

#### MARDEL FARM COTTAGES

- List Entry Number: 1050816
- Heritage Category: Listing
- Grade: II
- Location: MARDEL FARM COTTAGES, LONG ROAD, Tivetshall St. Mary, South Norfolk, Norfolk



#### CROFT COTTAGE

- List Entry Number: 1301739
- Heritage Category: Listing
- Grade: II
- Location: CROFT COTTAGE, THE STREET, Tivetshall St. Mary, South Norfolk, Norfolk

#### HILL FARMHOUSE

- List Entry Number: 1050812
- Heritage Category: Listing
- Grade: II
- Location: HILL FARMHOUSE, BOND'S ROAD, Tivetshall St. Mary, South Norfolk, Norfolk

#### WOODLANDS

- List Entry Number: 1179887
- Heritage Category: Listing
- Grade: II
- Location: WOODLANDS, THE STREET, Tivetshall St. Mary, South Norfolk, Norfolk

#### CENTURY HOUSE

- List Entry Number: 1372998
- Heritage Category: Listing
- Grade: II
- Location: CENTURY HOUSE, THE STREET, Tivetshall St. Mary, South Norfolk, Norfolk

#### MILL GREEN FARMHOUSE

- List Entry Number: 1301791
- Heritage Category: Listing
- Grade: II
- Location: MILL GREEN FARMHOUSE, RAM LANE, Tivetshall St. Mary, South Norfolk, Norfolk

#### MARDEL FARMHOUSE

- List Entry Number: 1050813
- Heritage Category: Listing
- Grade: II
- Location: MARDEL FARMHOUSE, NORWICH ROAD, Tivetshall St. Mary, South Norfolk, Norfolk

#### MEADOW COTTAGE

- List Entry Number: 1050815
- Heritage Category: Listing
- Grade: II
- Location: MEADOW COTTAGE, RECTORY ROAD, Tivetshall St. Mary, South Norfolk, Norfolk

#### ROSE FARMHOUSE

- List Entry Number: 1372997
- Heritage Category: Listing
- Grade: II
- Location: ROSE FARMHOUSE, LONG ROAD, Tivetshall St. Mary, South Norfolk, Norfolk

#### RAM INN

- List Entry Number: 1179739
- Heritage Category: Listing
- Grade: II
- Location: RAM INN, NORWICH ROAD, Tivetshall St. Mary, South Norfolk, Norfolk

#### Tivetshall St Margaret War Memorial

- List Entry Number: 1455231
- Heritage Category: Listing
- Grade: II
- Location: Tivetshall St. Margaret War Memorial, St Margaret's Churchyard, Hall Road, Tivetshall, Norfolk, NR15 2BD, Tivetshall St. Margaret, South Norfolk, Norfolk

#### CHURCH OF ST. MARGARET

- List Entry Number: 1373033
- Heritage Category: Listing
- Grade: I
- Location: CHURCH OF ST. MARGARET, STONY ROAD, Tivetshall St. Margaret, South Norfolk, Norfolk

#### SCHMETTERLING HOUSE

- List Entry Number: 1050006
- Heritage Category: Listing
- Grade: II
- Location: SCHMETTERLING HOUSE, GREEN LANE, Tivetshall St. Margaret, South Norfolk, Norfolk

#### PRANGLE FARMHOUSE

- List Entry Number: 1050008
- Heritage Category: Listing
- Grade: II
- Location: PRANGLE FARMHOUSE, LODGE ROAD, Tivetshall St. Margaret, South Norfolk, Norfolk

#### BARN COTTAGES

- List Entry Number: 1050010
- Heritage Category: Listing
- Grade: II

- Location: BARN COTTAGES, STATION ROAD, Tivetshall St. Margaret, South Norfolk, Norfolk

#### BECK GREEN FARMHOUSE

- List Entry Number: 1179692
- Heritage Category: Listing
- Grade: II
- Location: BECK GREEN FARMHOUSE, STATION ROAD, Tivetshall St. Margaret, South Norfolk, Norfolk

#### THE VALLEY FARMHOUSE

- List Entry Number: 1050809
- Heritage Category: Listing
- Grade: II
- Location: THE VALLEY FARMHOUSE, STATION ROAD, Tivetshall St. Margaret, South Norfolk, Norfolk

#### BARN IMMEDIATELY NORTH OF WILLOW TREE FARMHOUSE

- List Entry Number: 1050811
- Heritage Category: Listing
- Grade: II
- Location: BARN IMMEDIATELY NORTH OF WILLOW TREE FARMHOUSE, THE STREET, Tivetshall St. Margaret, South Norfolk, Norfolk

#### STAR GREEN FARMHOUSE

- List Entry Number: 1050007
- Heritage Category: Listing
- Grade: II
- Location: STAR GREEN FARMHOUSE, LODGE ROAD, Tivetshall St. Margaret, South Norfolk, Norfolk

#### RAILWAY FARMHOUSE

- List Entry Number: 1179613
- Heritage Category: Listing
- Grade: II
- Location: RAILWAY FARMHOUSE, HALES STREET, Tivetshall St. Margaret, South Norfolk, Norfolk

#### CHESTNUT FARMHOUSE

- List Entry Number: 1050808
- Heritage Category: Listing
- Grade: II
- Location: CHESTNUT FARMHOUSE, STATION ROAD, Tivetshall St. Margaret, South Norfolk, Norfolk

#### FRIENDS' MEETING HOUSE

- List Entry Number: 1179618

- Heritage Category: Listing
- Grade: II
- Location: FRIENDS' MEETING HOUSE, LODGE ROAD, Tivetshall St. Margaret, South Norfolk, Norfolk

#### AYLMER'S HALL WALK FARMHOUSE

- List Entry Number: 1301881
- Heritage Category: Listing
- Grade: II
- Location: AYLMEER'S HALL, CARPENTER'S WALK, Tivetshall St. Margaret, South Norfolk, Norfolk

#### HALL FARMHOUSE

- List Entry Number: 1050810
- Heritage Category: Listing
- Grade: II
- Location: HALL FARMHOUSE, STONY ROAD, Tivetshall St. Margaret, South Norfolk, Norfolk

#### WILLOW TREE FARMHOUSE

- List Entry Number: 1372994
- Heritage Category: Listing
- Grade: II
- Location: WILLOW TREE FARMHOUSE, THE STREET, Tivetshall St. Margaret, South Norfolk, Norfolk

#### BARN IMMEDIATELY SOUTH-EAST OF ELM TREE FARMHOUSE

- List Entry Number: 1179689
- Heritage Category: Listing
- Grade: II
- Location: BARN IMMEDIATELY SOUTH-EAST OF ELM TREE FARMHOUSE, SCHOOL LANE, Tivetshall St. Margaret, South Norfolk, Norfolk

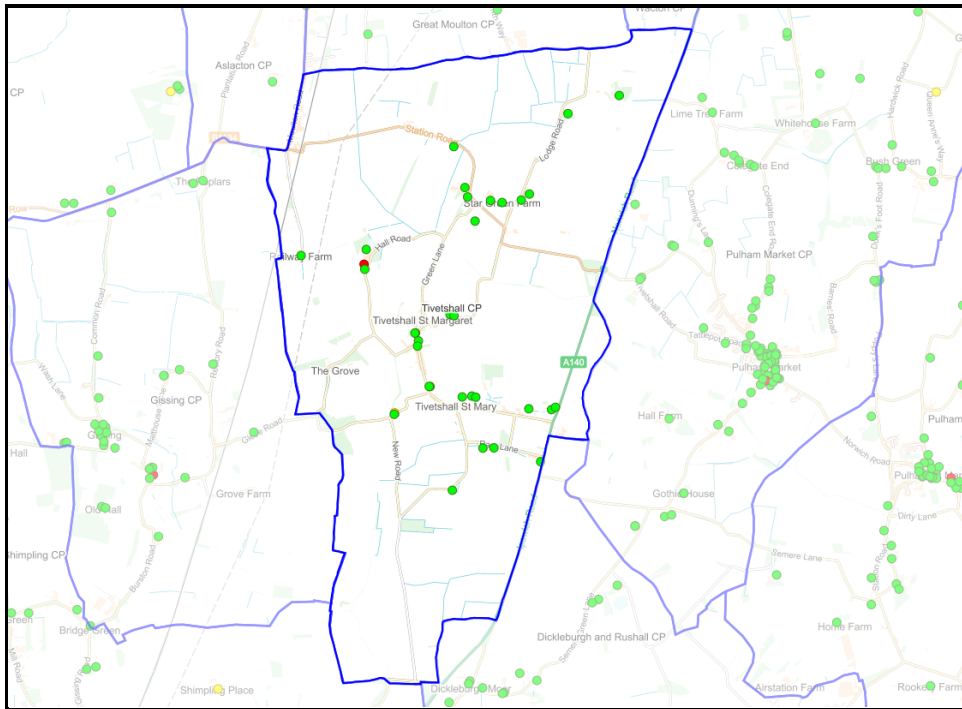
#### ELM TREE FARMHOUSE

- List Entry Number: 1050009
- Heritage Category: Listing
- Grade: II
- Location: ELM TREE FARMHOUSE, SCHOOL LANE, Tivetshall St. Margaret, South Norfolk, Norfolk

#### THE LODGE

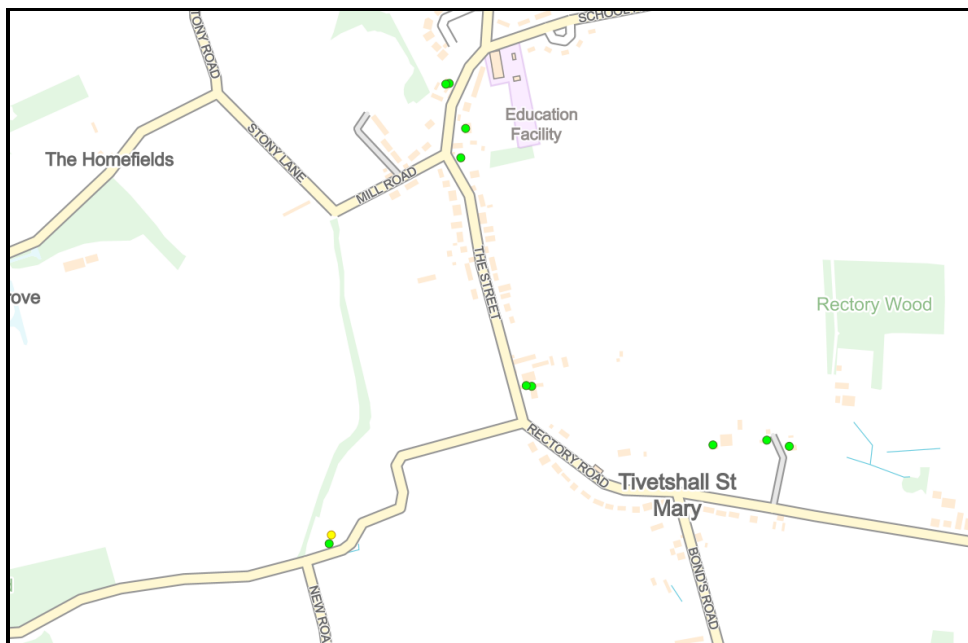
- List Entry Number: 1301853
- Heritage Category: Listing
- Grade: II
- Location: THE LODGE, LODGE ROAD, Tivetshall St. Margaret, South Norfolk, Norfolk

Figure 10 and 11 below: Maps showing the location of listed buildings in Tivetshall parish (yellow dot: Grade II\*, green dot: Grade II, red dot: Grade I).  
Source: Parish Online Website, map obtained 05.09.2020.



**Key**

- I
- II
- II\*



- 3.1.3 There are no buildings in Tivetshall parish on Historic England's Heritage at Risk Register.<sup>7</sup>
- 3.1.4 A search by the Norfolk Historic Environment record found 46 records in Tivetshall St. Margaret and 47 records in Tivetshall St. Mary. This information including maps has been viewed by the Neighbourhood Plan Steering Group to inform policy development.
- 3.1.5 The South Norfolk Site Specific Allocations and Policies Document Appendix B5, details the form and character of the communities as below:

**Tivetshall St Mary**

Development in the parish is concentrated along The Street/Rectory Road in a linear form comprising mainly single plot development. Development is also concentrated around School Road which is the dividing line between the parishes of Tivetshall St Mary and Tivetshall St Margaret. Isolated clusters of development are located at Rectory Road but these are away from the limited facilities that the Tivetshall share. Development in the remainder of the parish comprises individual dwellings and farmsteads. The village has an open rural character derived from the tree and hedge planting and views of the surrounding open countryside.

**Tivetshall St Margaret**

Development is concentrated along Green Lane, School Road and The Street in a linear form characterised by single plot development. This area is contiguous with development lying within the parish of Tivetshall St Mary and forms a single area of settlement joining both parishes.

**3.2 Housing**

- 3.2.1 Data from the 2011 Census (KS401EW) shows that in total there were 127 dwellings in Tivetshall St. Margaret and 122 dwellings in Tivetshall St. Mary.

**Figure 12 overleaf: Table showing dwelling type data (KS401EW) from the 2011 Census.**

**Source: [www.nomisweb.co.uk](http://www.nomisweb.co.uk) 25.09.2020.**

---

<sup>7</sup> [www.historicengland.co.uk](http://www.historicengland.co.uk) 25.09.2020

	Tivetshall St. Margaret	Tivetshall St. Margaret	Tivetshall St. Mary	Tivetshall St. Mary	South Norfolk	South Norfolk	Norfolk	Norfolk
Dwelling Type	number	%	number	%	number	%	number	%
All categories: Dwelling type	127	100.0	122	100.0	54,617	100.0	401,756	100.0
Unshared dwelling	127	100.0	122	100.0	54,616	100.0	401,625	100.0
Shared dwelling: Two household spaces	0	0.0	0	0.0	0	0.0	41	0.0
Shared dwelling: Three or more household spaces	0	0.0	0	0.0	1	0.0	90	0.0
All categories: Household spaces	127	100.0	122	100.0	54,620	100.0	402,178	100.0
Household spaces with at least one usual resident	126	99.2	120	98.4	52,809	96.7	372,085	92.5
Household spaces with no usual residents	1	0.8	2	1.6	1,811	3.3	30,093	7.5
Whole house or bungalow: Detached	56	44.1	74	60.7	27,839	51.0	154,210	38.3
Whole house or bungalow: Semi- detached	53	41.7	46	37.7	16,623	30.4	114,641	28.5
Whole house or bungalow: Terraced (including end-terrace)	13	10.2	0	0.0	6,602	12.1	76,955	19.1
Flat, maisonette or apartment: Purpose-built block of flats or tenement	4	3.1	0	0.0	2,610	4.8	39,510	9.8
Flat, maisonette or apartment: Part of a converted or shared house (including bed-sits)	1	0.8	1	0.8	472	0.9	7,376	1.8
Flat, maisonette or apartment: In a commercial building	0	0.0	0	0.0	257	0.5	3,299	0.8

	Tivetshall St. Margaret	Tivetshall St. Margaret	Tivetshall St. Mary	Tivetshall St. Mary	South Norfolk	South Norfolk	Norfolk	Norfolk
Dwelling Type	number	%	number	%	number	%	number	%
Caravan or other mobile or temporary structure	0	0.0	1	0.8	217	0.4	6,187	1.5

3.2.2 Data from the 2011 Census (KS402EW) shows that there are 126 households in Tivetshall St. Margaret and 120 households in Tivetshall St. Mary.

**Figure 13 below: Table showing tenure data (KS402EW) from the 2011 Census.**

Source: [www.nomisweb.co.uk](http://www.nomisweb.co.uk) 25.09.2020.

	Tivetshall St. Margaret	Tivetshall St. Margaret	Tivetshall St. Mary	Tivetshall St. Mary	South Norfolk	South Norfolk	Norfolk	Norfolk
Tenure	number	%	number	%	number	%	number	%
All households	126	100.0	120	100.0	52,809	100.0	372,085	100.0
Owned	87	69.0	99	82.5	39,555	74.9	248,840	66.9
Owned: Owned outright	43	34.1	51	42.5	21,563	40.8	138,288	37.2
Owned: Owned with a mortgage or loan	44	34.9	48	40.0	17,992	34.1	110,552	29.7
Shared ownership (part owned and part rented)	6	4.8	0	0.0	537	1.0	2,204	0.6
Social rented	18	14.3	13	10.8	5,965	11.3	59,297	15.9
Social rented: Rented from council (Local Authority)	4	3.2	3	2.5	1,440	2.7	27,322	7.3
Social rented: Other	14	11.1	10	8.3	4,525	8.6	31,975	8.6
Private rented	12	9.5	8	6.7	5,916	11.2	55,686	15.0
Private rented: Private landlord or letting agency	9	7.1	8	6.7	5,278	10.0	49,675	13.4
Private rented: Other	3	2.4	0	0.0	638	1.2	6,011	1.6
Living rent free	3	2.4	0	0.0	836	1.6	6,058	1.6



3.2.3 According to the property website Zoopla, the average price paid for a property in the last twelve months in Tivetshall St Margaret is £250,00 and in Tivetshall St. Mary is £370,000.<sup>8</sup>

---

<sup>8</sup> [www.zoopla.co.uk](http://www.zoopla.co.uk) 25.09.2020

## 4. Transport and Access

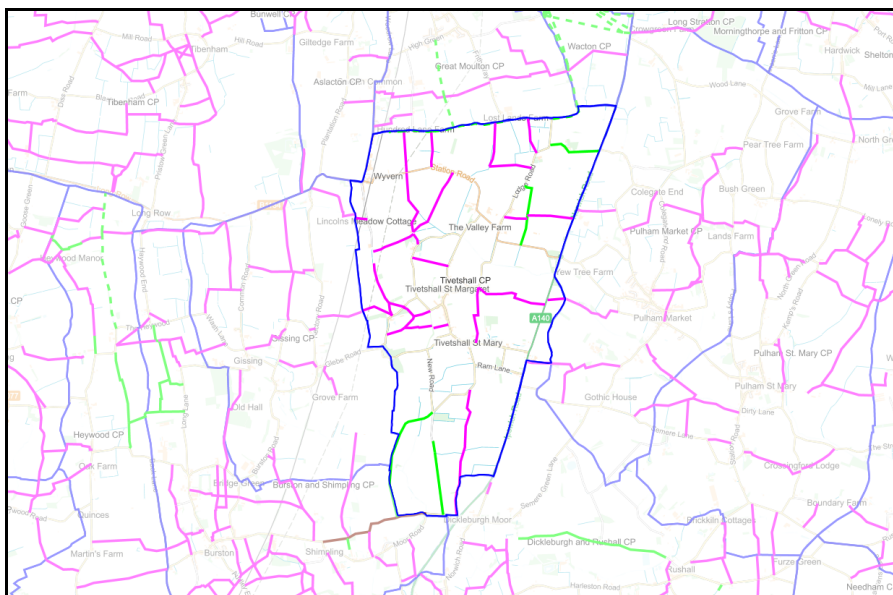
### 4.1 Public Transport

- 4.1.1 Konectbus operate a return bus service from Tivetshall to Norwich on weekdays and Simonds provide a return bus service to Norwich and Diss on Saturdays.
- 4.1.2 The nearest train station is in Diss, 15km from Tivetshall. Norwich train station is 27km from Tivetshall. The Diss to Norwich railway line passes through the western area of the parish.
- 4.1.3 There is a community car scheme operating in the parish for transport to medical appointments for residents who are unable to drive or do not have access to a car. The Borderhoppa provides a mini-bus dial-a-ride service covering Tivetshall St. Margaret and Tivetshall St. Mary.

### 4.2 Walking and cycling

- 4.2.1 There are a number of footpaths and bridleways In Tivetshall parish, including Boudica's Way towards the south of the parish. Tivetshall Parish Council installed Village Walks boards in the parish in 2006, which detail a circular walk and provide information about the history of the area and the flora and fauna. In addition, Church Lane runs along the west of St Mary's ruin to Mill Road, and although this is not on the definitive map, it has been used as a public footpath and bridleway for many years. It is believed this lane once joined up with Broadway and formed part of an ancient droving route. It is currently one of the most used lanes for walking in the village and joins with two footpaths which provide circular walks of the village.

**Figure 14 below: Map showing public footpaths (in pink) and bridleways (green).**  
**Source: Parish Online mapping website. Map obtained 05.10.2020.**



### 4.3 Car ownership and travel to work

4.3.1 Data from the 2011 Census (KS404EW) shows that car ownership levels in Tivetshall parish are high. 4.8% of households in Tivetshall St. Margaret and 5% of households in Tivetshall St. Mary have no car or van availability. This compares to 11.7% of households in South Norfolk and 18.8% of households in Norfolk having no car or van availability.

**Figure 15 below: Table showing household car or van availability data from the 2011 Census.**

Source: [www.nomisweb.co.uk](http://www.nomisweb.co.uk) Data obtained 25.09.2020.

	Tivetshall St. Margaret	Tivetshall St. Margaret	Tivetshall St. Mary	Tivetshall St. Mary
Household car or van availability	Number	Percentage %	Number	Percentage %
<b>All categories: Car or van availability</b>	<b>126</b>	<b>100.0</b>	<b>120</b>	<b>100.0</b>
No cars or vans in household	6	4.8	6	5.0
1 car or van in household	45	35.7	34	28.3
2 cars or vans in household	52	41.3	57	47.5
3 cars or vans in household	13	10.3	18	15.0
4 or more cars or vans in household	10	7.9	5	4.2

4.3.2 Data from the 2011 Census (QS701EW) shows that the main method of travel to work by residents of Tivetshall St. Margaret and Tivetshall St. Mary is by car.

**Figure 16 overleaf: Table showing method of travel to work.**

Source: [www.nomisweb.co.uk](http://www.nomisweb.co.uk). Data obtained 05.10.2020.

	<b>Tivetshall St. Margaret</b>	<b>Tivetshall St. Margaret</b>	<b>Tivetshall St. Mary</b>	<b>Tivetshall St. Mary</b>
<b>Method of Travel to Work</b>	Count	%	Count	%
<b>All categories: Method of travel to work</b>	<b>233</b>	<b>100</b>	<b>229</b>	<b>100</b>
Work mainly at or from home	22	9.4%	22	9.6%
Underground, metro, light rail, tram	0	0%	0	0%
Train	2	0.9%	3	1.31%
Bus, minibus or coach	0	0%	5	2.18%
Taxi	0	0%	0	0%
Motorcycle, scooter or moped	0	0%	1	0.43%
Driving a car or van	123	52.7%	114	49.78%
Passenger in a car or van	10	4.29%	5	2.18%
Bicycle	1	0.42%	2	0.87%
On foot	2	0.85%	3	1.31%
Other method of travel to work	2	0.85%	1	0.43%
Not in employment	71	30.47%	73	31.87%

4.3.3 Data from the 2011 Census (QS702EW) shows that of all usual residents in employment the week before the Census, aged 16 – 74 years.

**Figure 17 below: Table showing distance travelled to work for all usual residents aged 16 - 74 years in employment.**

Source: [www.nomisweb.co.uk](http://www.nomisweb.co.uk). Data obtained 05.10.2020.

<b>Distance travelled to work</b>	<b>Tivetshall St. Margaret</b>	<b>Tivetshall St. Margaret</b>	<b>Tivetshall St. Mary</b>	<b>Tivetshall St. Mary</b>
All categories: Distance travelled to work	162	100%	156	100%
Less than 2km	6	3.7%	2	1.2%
2km to less than 5km	6	3.7%	10	6.4%
5km to less than 10km	26	16%	27	17.3%
10km to less than 20km	29	17.9%	25	16%
20km to less than 30km	18	11.1%	26	16.6%
30km to less than 40km	15	9.3%	8	5.1%
40km to less than 60km	7	4.3%	5	3.2%
60km and over	5	3.1%	3	1.9%
Work mainly at or from home	37	22.8%	34	21.7%
Other	13	8%	16	10.2%

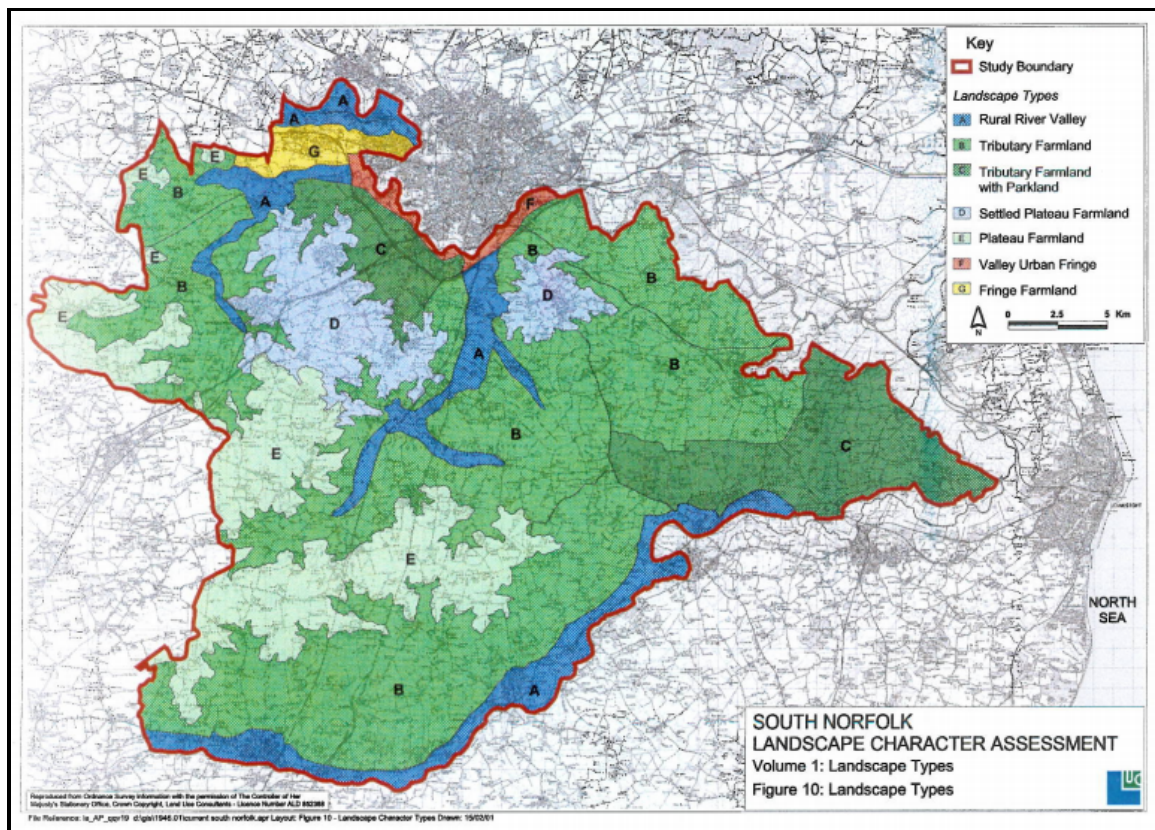
## 5. Environment and landscape

### 5.1 Landscape character

5.1.1 South Norfolk Councils Landscape Character Assessment identifies Tivetshall parish as Great Moulton Plateau Farmland and Waveney Tributary Farmland.

Figure 18 below: Map showing landscape character types.

Source: [www.south-norfolk.gov.uk](http://www.south-norfolk.gov.uk). Map obtained 05.10.2020.



5.1.2 The key characteristics of the Great Moulton Plateau Farmland Landscape type are:

- Flat, elevated plateau landform above the 50m contour with little topographic variation.
- Extensive arable farmland with large-scale fields and notable absence of boundaries.
- A large-scale landscape of openness and exposure.
- Isolated and infrequent blocks of mixed woodland, otherwise woodland is confined to tiny farm copses.
- A number of greens and commons, some with associated pond habitats.
- Expansive skies are a defining feature with distant views and farm buildings visible in the open landscape.
- Hedgerows are sparse with fuller enclosure along roadsides.
- Hedgerow trees are an important feature, marking the lines of former boundaries.

- A140 cuts north-south through the centre of the character area. Otherwise straight rural roads cut through the area.
- Grass verges and occasionally ditches occur along roadsides.
- Timber framed houses and moats.
- Large scale farm buildings, water towers, telegraph poles exposed in this open landscape and distinct absence of churches.
- Sparsely settled with scattered farmhouses, some linear settlement with absence of centre/ core.
- Disused airfields are a feature of the plateau at Shelton and Pristow Green

5.1.3 The overall strategy is to conserve the Great Moulton Plateau Farmland with its expansive skies, created by its elevated landform, dominance of arable farming and lack of settlement. It would be beneficial to:

- Conserve and maintain grass verges alongside roads;
- Re-instate hedgerows alongside roads and as field boundaries. Also maintain and promoting hedgerow trees;
- Conserve and manage the existing large blocks of woodland.

5.1.4 Development Considerations for the Great Moulton Plateau Farmland are to:

- Maintain the essentially open, unsettled character;
- Limit linear development along roads - prevent merging of settlements to maintain individual identity;
- Ensure main road (A140) through the character area does not provide a catalyst for linear development.
- Conserve large scale open views and expansive skies and consider the effects of further tall structures on these characteristics.

5.1.3 The key characteristics of the Waveney Tributary Farmland are:

- Transitional landscape occupying the mid ground between the upland Plateau (Great Moulton Plateau Farmland) and the main river valley (Waveney Valley).
- Undulating landform to the south of the area where it is dissected by tributaries. Land is higher and flatter towards the north of the character area adjoining the Great Moulton Plateau Farmland.
- A large-scale open landscape on the higher ground with some distant views.
- Pockets of enclosure and intimacy associated with the tributaries.
- Narrow streams, drainage channels (within grass verges) ponds and moats are characteristic. Ditches occur along roadsides and in places divide fields.
- Predominantly arable farmland with a varied field pattern. Fields are small to the south of the character area, larger on the higher plateau areas.
- Mature hedgerow trees are very distinctive especially large mature oaks.
- Hawthorn/ blackthorn hedges divide fields.
- Scattered blocks of woodland with some larger blocks having SSSI designations.
- Pockets of parkland and remnant parkland occur.
- Diversity of ecological assemblages including grassland, wet habitats,

woodland, some of which are SSSI.

- Round tower and isolated churches are distinctive landmarks. Moats and earthworks are a feature.
- Settlement occurs throughout the character area. Villages are frequently linear along roads with some villages set around greens.
- Large farm units and processing units are present plus pylons which cut through this area.
- The A140 and the Norwich-Diss railway line cut across the character area north south. Otherwise winding rural roads, and sunken lanes dissect the rural area.
- A peaceful and rural landscape.

5.1.4 The overall strategy is to conserve the rural, peaceful quality of the Waveney Tributary Farmland with its strong farmland character, threaded by small tributary watercourses, and mix of more intimate, wooded, enclosed valleys contrasting with more open landscapes. There are opportunities to enhance the landscape to reinforce local character, which are to:

- Maintain and manage moats, field ponds and drainage ditches;
- Protect and manage rural grass verges;
- Maintain areas of pasture within the tributary valleys and seek opportunities to extend pastures along watercourses;
- Maintain the stock of hedgerow trees, particularly along roadsides and encourage new generations of hedgerow trees to replace existing stock;
- Consider opportunities to reinstate hedgerows where they have been lost, and particularly along roadsides;
- Manage woodlands to conserve character and enhance biodiversity and consider opportunities to extend and link woodland, including the creation of new woodlands around villages;
- Conserve and restore historic parkland landscapes;
- Conserve the distinctive small-scale historic field pattern around villages as at Alburgh, Dickleburgh, Denton and Burston.

5.1.5 Any development in the area must respect the character of Waveney Tributary Farmland and in particular consider the following:

- Conserve the rural peaceful character, with the pattern of small villages and settlements set within the agricultural landscape, but not dominating it;
- Conserve the character and individual identity of the villages either set around greens or loosely following roads. Infilling or extension of settlements could result in a change to a more compact character and merging of settlement and loss of individual identity;
- Seek to maintain the soft grass verges and open frontages that characterise the settlements along rural roads and avoid creation of hard boundaries or surfaces which would impart a more urban character;
- Conserve village greens and commons;
- Conserve the local vernacular features that contribute to the rural character

including the distinctive road signs and road names. Conserve the quiet, rural character of the narrow lanes that cross the area;

- Consider potential effects of potential large-scale developments (for example relating to airfield sites).<sup>9</sup>

## 5.2 Biodiversity and Geodiversity

5.2.1 A search by the Norfolk Biodiversity Information Service found protected species in Tivetshall parish and the surrounding 5km. This information has been sent to the Neighbourhood Plan Steering Group.

5.2.2 There are two County Wildlife Sites in Tivetshall parish. County Wildlife Sites are non-statutory designations but recognise the high value of a site for wildlife. The County Wildlife Sites in Tivetshall parish are:

**CWS 40 The Shrubbery** is an area of ancient coppice-with-standards woodland, separated from CWS 41 by a narrow lane.

**CWS 41 Brickiln Wood** is an area of ancient woodland with a well-developed coppice layer. The wood contains at least five shallow ponds.

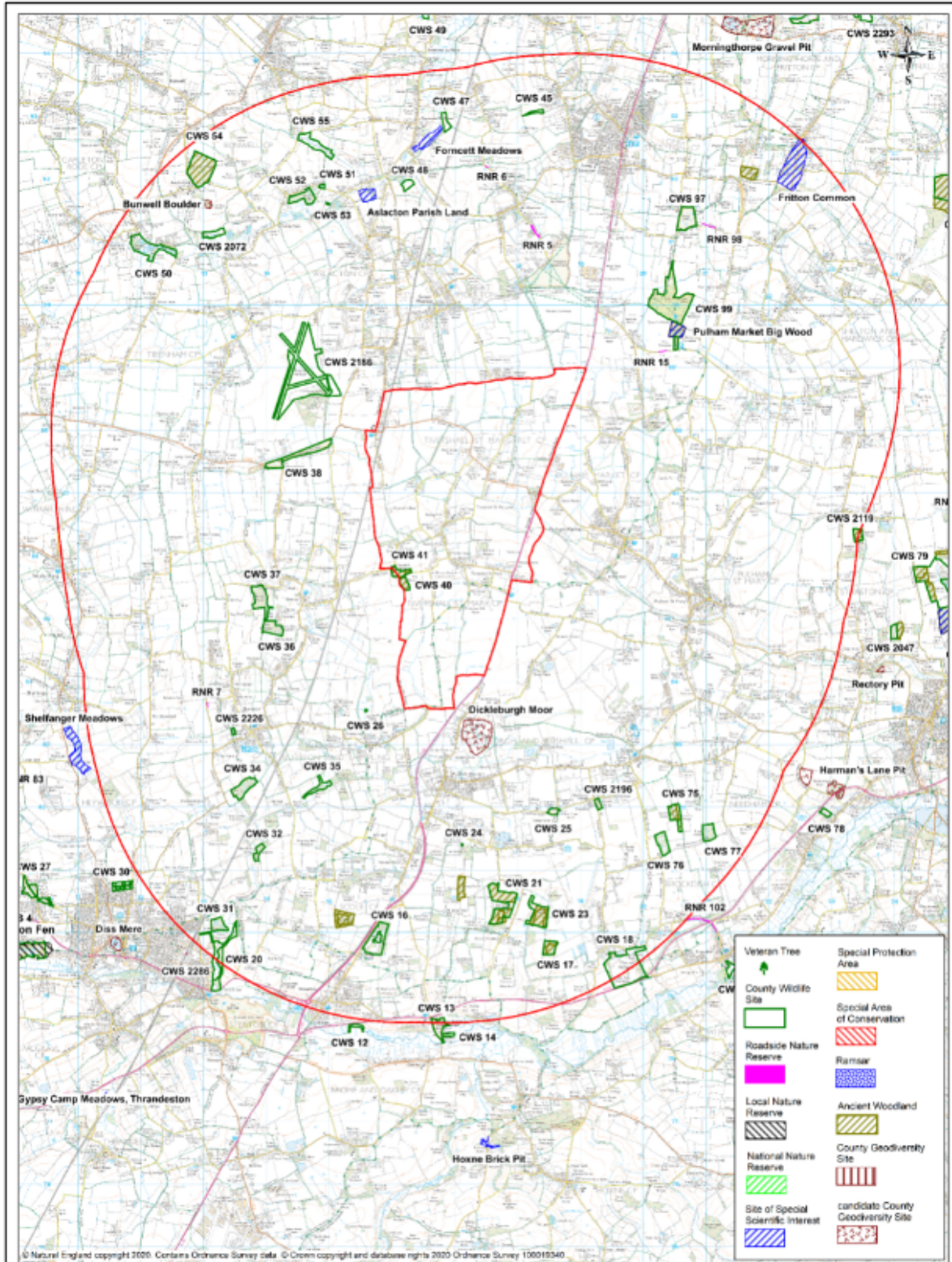
**Figure 19 overleaf: A map showing designated sites within a 5km radius of Tivetshall parish, including the County Wildlife Sites in Tivetshall parish.**

**Source: Norfolk Biodiversity Information Service. 05.10.2020.**

---

<sup>9</sup> South Norfolk Council Landscape Assessment, volume 4, Waveney Tributary Farmland 2001





**Tivetshall Parish**

5km Data Search

Scale 1:55000

Compiled by L. Oddy on 28 September 2020

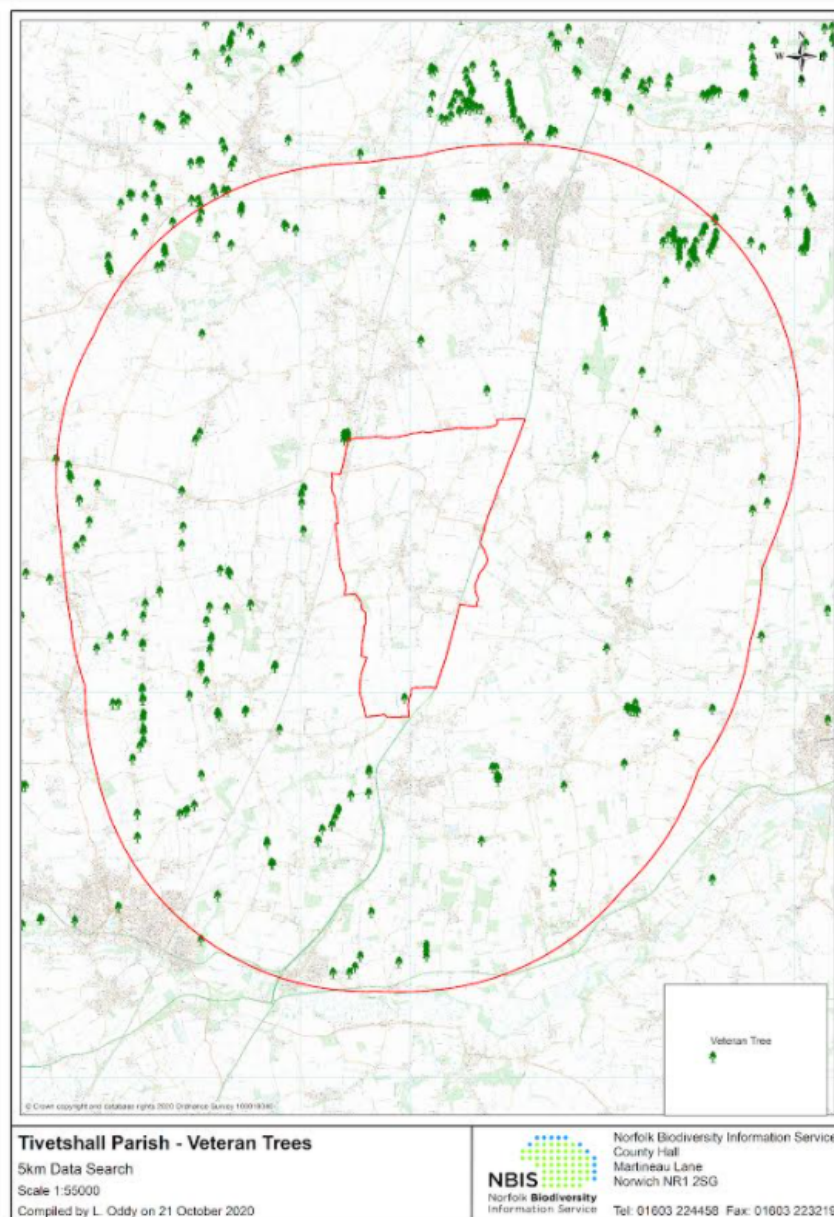


Norfolk Biodiversity Information Service  
County Hall  
Martineau Lane  
Norwich NR1 2SG

Tel: 01603 224458 Fax: 01603 223219

- 5.2.3 Since the establishment of Dickleburgh Moor Nature Reserve to the south of the village there has been an anecdotal increase in the bird species and numbers seen in the south of the village, in particular buzzards, red kites, golden plover and lapwing.
- 5.2.4 A map showing the location of veteran trees in Tivetshall parish and the surrounding 5km can be seen in Figure 20 below. A veteran tree is one that is of interest biologically, aesthetically or culturally because of its age, or a tree in the ancient stage of its life or trees that are old relative to others of the same species. Please note, Norfolk Biodiversity Information Service advised the information in the map may not be up to date.

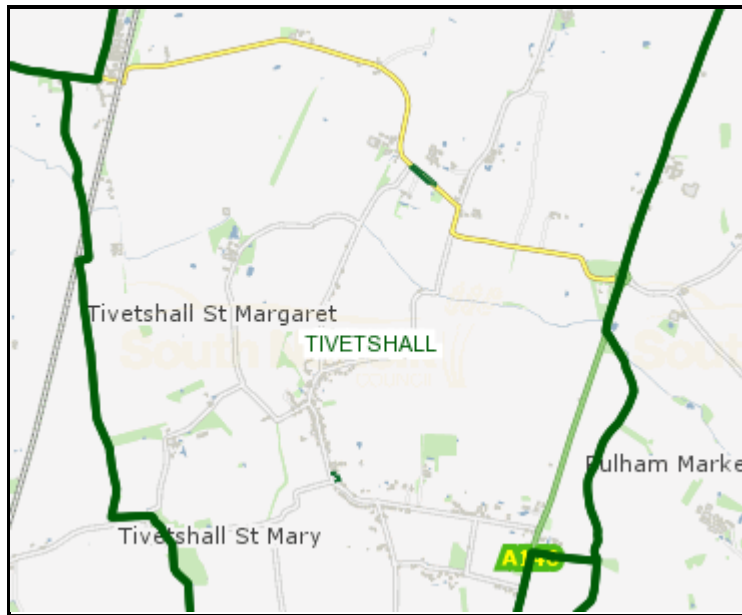
**Figure 20 below: Map showing the location of veteran trees.**  
**Source: Norfolk Biodiversity Information Service. 21.10.2020.**



- 5.2.5 There are two Tree Preservation Orders in Tivetshall parish, SN268 and 020. The map below shows the location of Tree Preservation Orders in Tivetshall. A Tree Preservation Order is an order made by a local planning authority in England to protect specific trees, groups of trees or woodlands in the interest of amenity.

**Figure 21 below: Map showing the location of Tree Preservation Orders shown in green.**

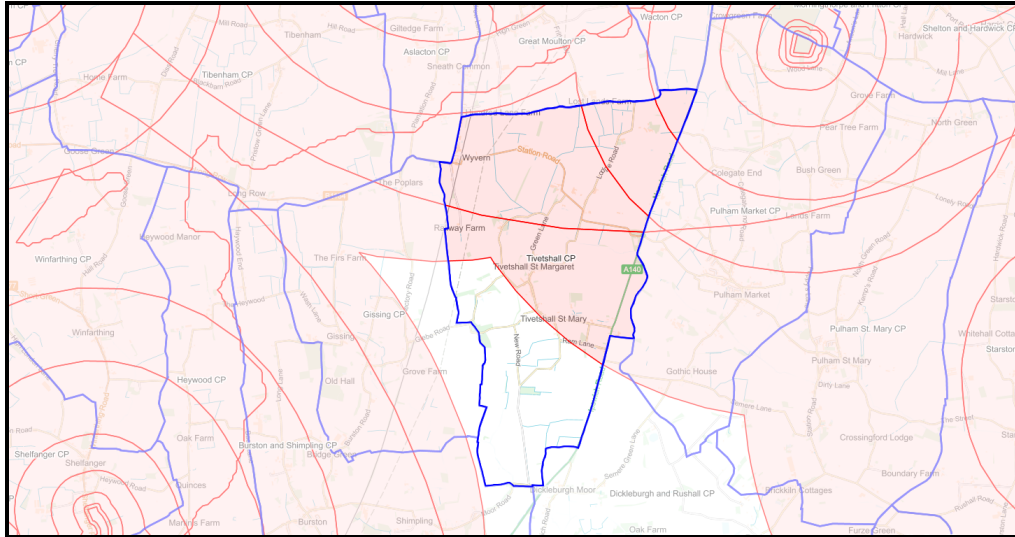
**Source: [www.my.south-norfolk.gov.uk](http://www.my.south-norfolk.gov.uk). Map obtained 21.10.2020.**



- 5.2.6 Parts of Tivetshall parish are in the Site of Special Scientific Interest (SSSI) Impact Risk Zones for Pulham Market Big Wood SSSI and Aslacton Parish Land SSSI. Planning applications in these areas need to be assessed for the likely impact on the SSSIs.

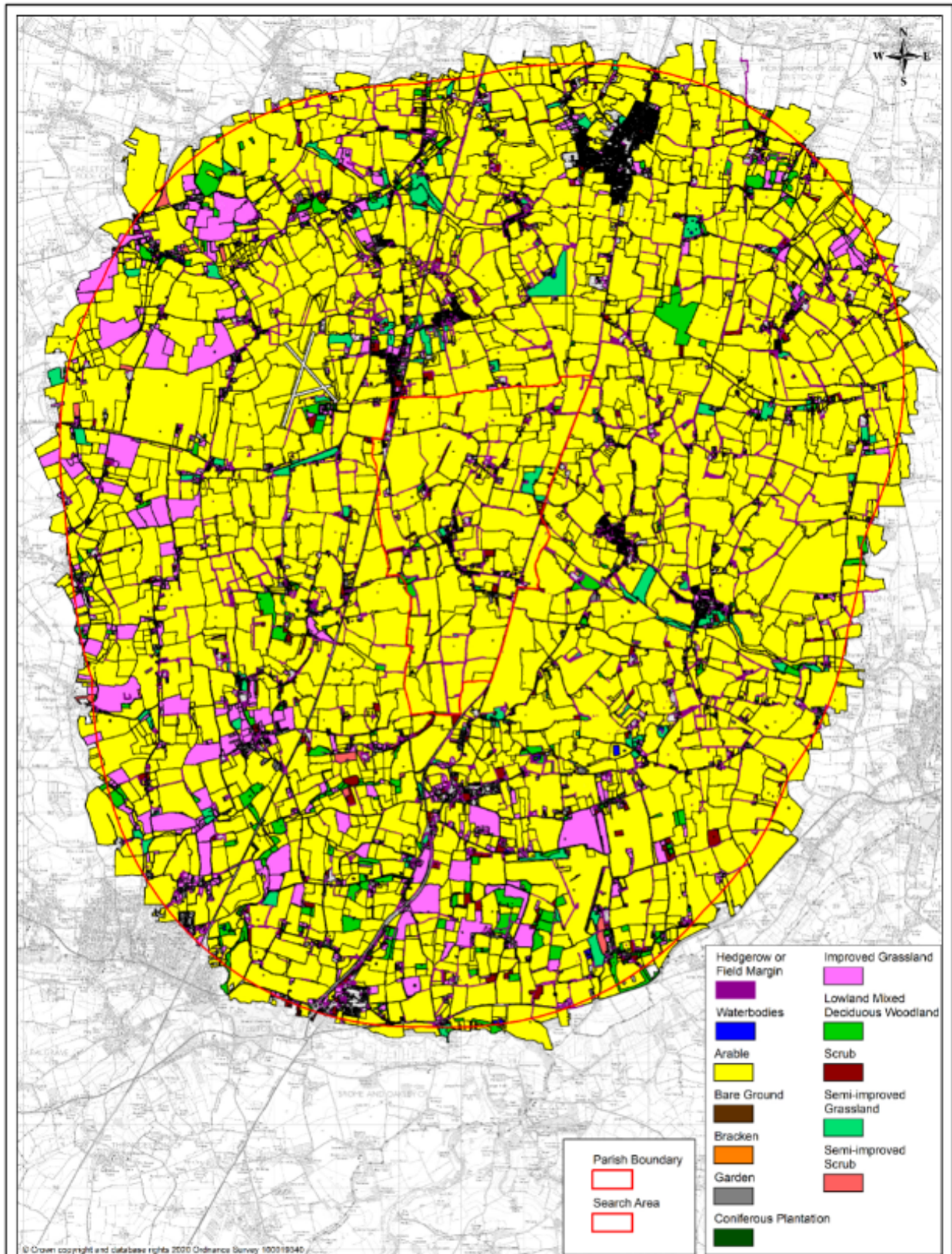
**Figure 22 below: Map showing the SSSI Impact Risk Zones (red shaded areas) covering Tivetshall parish.**

**Source: Parish Online mapping website. Map obtained 05.10.2020.**



5.2.7 The map in Figure 23 shows that habitats and land use in Tivetshall parish is mainly arable.

**Figure 23 overleaf: Map showing habitats and land use in Tivetshall parish.**  
**Source: Norfolk Biodiversity Information Service. 28.09.2020.**

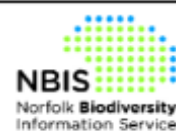


### Tivetshall Parish

Habitats and Land Use

Scale 1:55000

Compiled by L. Oddy on 28 September 2020



Norfolk Biodiversity Information Service  
County Hall  
Martineau Lane  
Norwich NR1 2SG

Tel: 01603 224458 Fax: 01603 223219

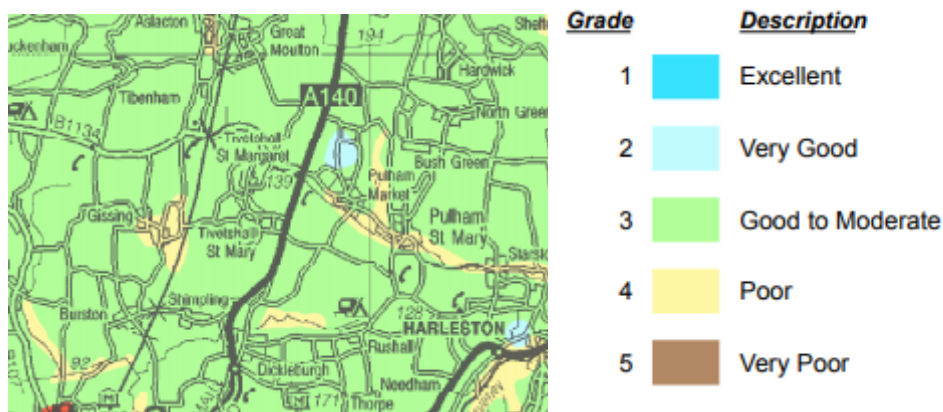
### 5.3 Land, soil and water resources

- 5.3.1 Natural England’s Agricultural Land Classification map for the eastern region, shows that the majority of agricultural land is classed as ‘good to moderate’, with a small amount being classed as ‘poor’ in the parish.

**Figure 24 below: Map showing the Agricultural Land Classification in Tivetshall parish.**

**Source:**

**[www.http://publications.naturalengland.org.uk/category/5954148537204736](http://publications.naturalengland.org.uk/category/5954148537204736)  
28.09.2020**



- 5.3.2 Soilscape 18 is found in Tivetshall parish, this is described as slowly permeable seasonally wet slightly acid but base-rich loamy and clayey soil.<sup>10</sup>

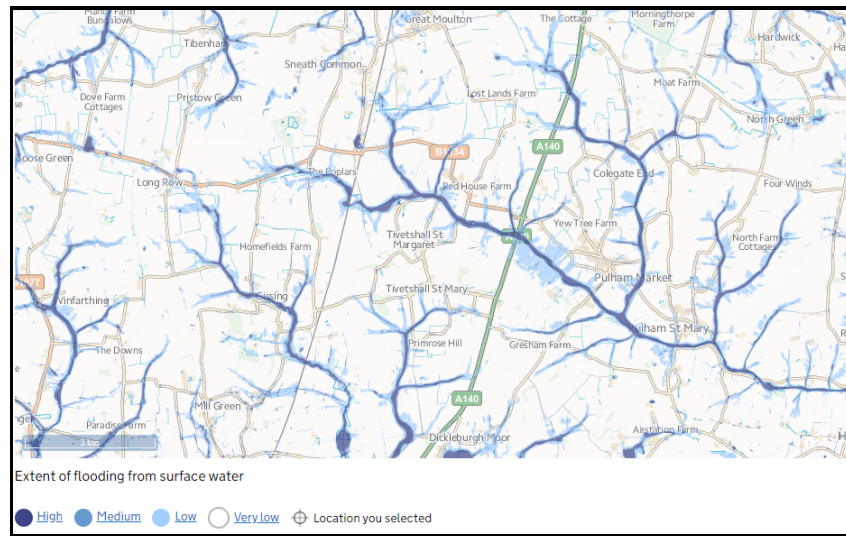
### 5.4 Rivers and flooding

- 5.4.1 The majority of the area of Tivetshall parish is at low risk of flooding from surface water. Some areas of Tivetshall are at low, medium and high risk of surface water flooding, which can be seen in Figure 25 overleaf. Surface water flooding, sometimes known as flash flooding happens when heavy rain cannot drain away. As seen on the map in Figure 25 there are small areas at a high risk of surface water flooding as shown in dark blue. This means that each year this area has a chance of flooding of greater than 3.3%. Small areas are at a medium risk of surface water flooding, which means they have a chance of flooding between 1% and 3.3%. Small areas are at a low risk of surface water flooding, this means that each year the area has a chance of flooding of between 0.1% and 1%.<sup>11</sup>

<sup>10</sup> <http://www.landis.org.uk/soilscales/> 28.09.2020

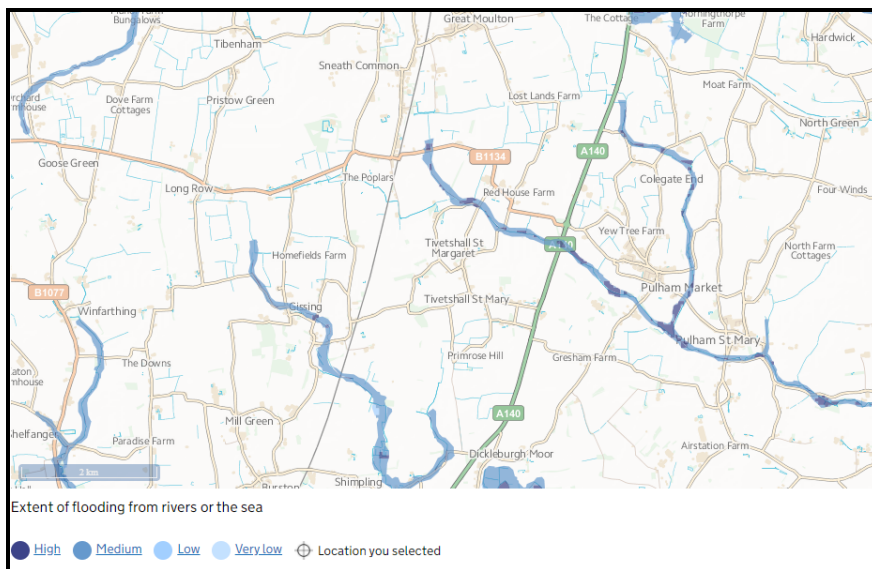
<sup>11</sup> <https://flood-warning-information.service.gov.uk/long-term-flood-risk/map> 28.09.2020

**Figure 25 below: Map showing the extent of flooding from surface water.**  
Source: <https://flood-warning-information.service.gov.uk/long-term-flood-risk>.  
Obtained 05.10.2020.



5.4.2 Very small areas of Tivetshall parish are at risk of flooding from rivers as can be seen in Figure 26 below.

**Figure 26 below: Map showing the extent of risk of flooding from the river.**  
Source: <https://flood-warning-information.service.gov.uk/long-term-flood-risk>.  
Obtained 05.10.2020.



## 6. Business and Employment

### 6.1 Employment

6.1.1 Data from the 2011 Census (QS601EW) shows that 76% of all usual residents aged 16 to 74 in Tivetshall St. Margaret and 68% of residents in Tivetshall St. Mary are economically active.

**Figure 27 below: Table showing Economic Activity of usual residents aged 16 – 74.**

**Source: [www.nomisweb.co.uk](http://www.nomisweb.co.uk). Data obtained 05.10.2020.**

	Tivetshall St. Margaret	Tivetshall St. Margaret	Tivetshall St. Mary	Tivetshall St. Mary	South Norfolk	South Norfolk	Norfolk	Norfolk
<b>Economic Activity</b>	Count	%	Count	%	Count	%	Count	%
All categories: Economic activity	233	100%	229	100%	89,337	100%	623,798	100%
Economically active: Total	177	76%	159	69.4%	63,158	70.7%	424,732	68.1%
Economically active: Employee: Part-time	32	13.7%	34	14.8%	14,032	15.7%	94,006	15.1%
Economically active: Employee: Full-time	88	37.8%	76	33.2%	33,553	37.6%	225,180	36.1%
Economically active: Self-employed with employees: Part-time	2	0.9%	0	0%	379	0.4%	2,304	0.4%
Economically active: Self-employed with employees: Full-time	6	2.6%	7	3.1%	2,052	2.3%	11,990	1.9%
Economically active: Self-employed without employees: Part-time	10	4.3%	14	6.1%	3,019	3.4%	17,018	2.7%
Economically active: Self-employed without employees: Full-time	24	10.3%	23	10%	5,477	6.1%	33,140	5.3%

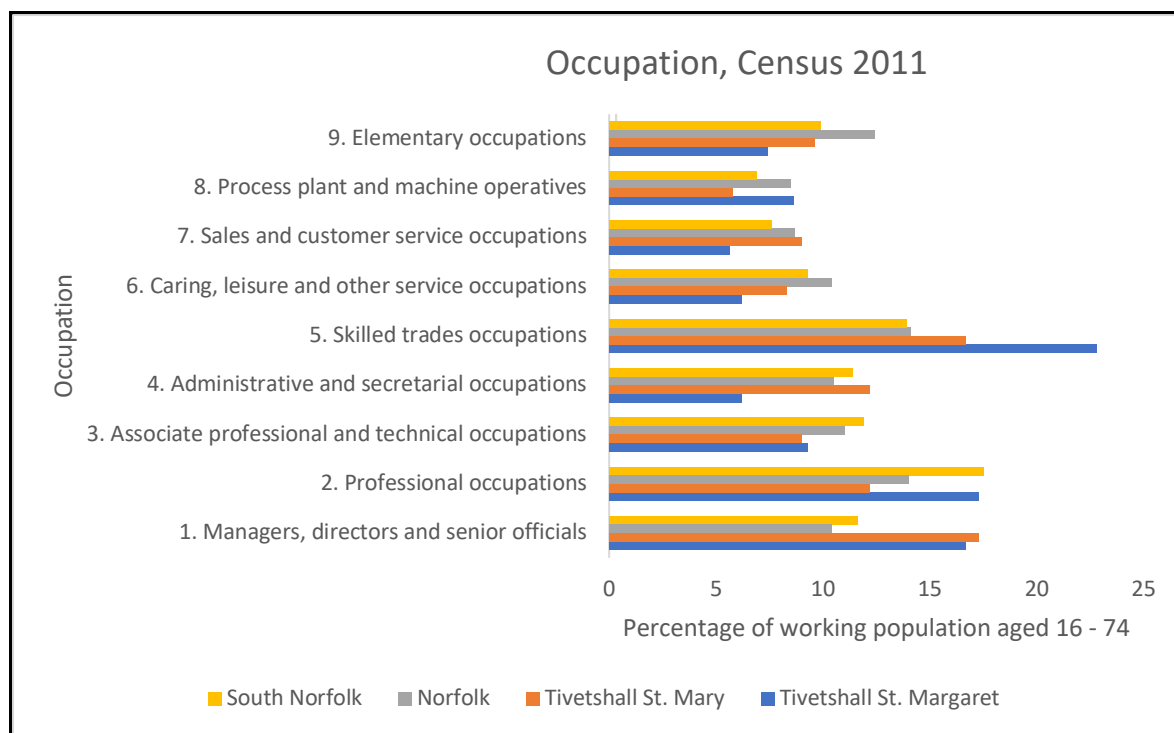


	Tivetshall St. Margaret	Tivetshall St. Margaret	Tivetshall St. Mary	Tivetshall St. Mary	South Norfolk	South Norfolk	Norfolk	Norfolk
Economically active: Unemployed	14	6%	2	0.9%	2,439	2.7%	23,678	3.8%
Economically active: Full-time student	1	0.4%	3	1.3%	2,207	2.5%	17,416	2.8%
Economically inactive: Total	56	24%	70	30.6%	26,179	29.3%	199,066	31.9%
Economically inactive: Retired	33	14.2%	44	19.2%	16,249	18.2%	111,739	17.9%
Economically inactive: Student (including full-time students)	9	4%	5	2%	2,844	3%	25,667	4%
Economically inactive: Looking after home or family	4	2%	14	6%	3,450	4%	25,902	4%
Economically inactive: Long-term sick or disabled	7	3%	6	3%	2,506	3%	24,187	4%
Economically inactive: Other	3	1%	1	0%	1,130	1%	11,571	2%

6.1.2 The graph overleaf shows the occupations of the population (2011 Census ks608ew) of Tivetshall St. Margaret and Tivetshall St. Mary compared to South Norfolk and Norfolk. There are more skilled trades people in Tivetshall St. Margaret compared to the other areas.

**Figure 28 overleaf: Graph showing the occupation of residents.**

**Source: [www.ruralservicesonline.co.uk](http://www.ruralservicesonline.co.uk) 07.10.2020.**



6.1.3 There are a range of registered businesses in Tivetshall parish. South Norfolk Council provided a list of non-domestic rate paying businesses, which can be seen below.

Anti Waste Limited	Recycling Centre	Station Road	Tivetshall St Margaret	NR15 2BA
Bala Chang Ltd	Bala Chang Kitchen At	Fernleigh	Station Road	NR15 2ED
Banqueting Hire Services Ltd	Thistledown Farm	Station Road	Tivetshall St Margaret	NR15 2DL
Banqueting Hire Services Ltd	Storage Unit 4	The Yard At Thistledown Farm	Station Road	NR15 2BA
Banqueting Hire Services Ltd	Office And Showrooms	Thistledown Farm	Station Road	NR15 2BA
Banqueting Kitchen Equipment Ltd	Storage Containers 1-5 The Yard	Thistledown Farm	Station Road	NR15 2BA
Banqueting Kitchen Equipment Ltd	Storage And Workshop	Thistledown Farm	Station Road	NR15 2BA
Kitchen Hire Services Ltd	Storage Unit 1 - 3	The Yard At Thistledown Farm	Station Road	NR15 2BA
Orange PCS Limited	Orange site ref NRF0155 adj Maltings	Station Road	Tivetshall St Margaret	NR15 2BB
Orange PCS Limited	Orange site ref NRF0101 at Primrose Hill	Bonds Road	Tivetshall St Mary	NR15 2BX
Redacted - personal data	The Beeches	Rectory Road	Tivetshall St Mary	NR15 2AL
Redacted - personal data	Old Railway Station	Moulton Road	Tivetshall St Margaret	NR15 2EB
Redacted - personal data	Marlborough	Bonds Road	Tivetshall St Mary	NR15 2BX
Redacted - personal data	Primrose Cottage	Bonds Road	Tivetshall St Mary	NR15 2BX
Redacted - personal data	Rectory Garage	Rectory Road	Tivetshall St Mary	NR15 2DD
Redacted - personal data	Glover Brothers	Rectory Road	Tivetshall St Mary	NR15 2DD
Sapientia Education Trust	Tivetshall Community Primary School	School Road	Tivetshall St Mary	NR15 2BP
Simpsons Malt Ltd	The Maltings	Moulton Road	Tivetshall St Margaret	NR15 2AJ
Tivetshall Village Hall Management Committee	Tivetshall Village Hall	Green Lane	Tivetshall St Margaret	NR15 2BJ
Trafficmaster Plc	Trafficmaster Site 4239D	Ipswich Road	Tivetshall St Mary	NR15 2DH
Vanellus Inns Limited	The Old Ram	Ipswich Road	Tivetshall St Mary	NR15 2DE
Waveney ( Holdings ) Limited	Railway Hotel	Station Road	Tivetshall St Margaret	NR15 2EB
Weddell & Turner Ltd	15 Thwaites Oak Close	Tivetshall St Margaret	Norwich	NR15 2AW

6.1.4 Businesses listed on Yell.com can be seen below:

Biltons

Drainage Consultants

The Poplars Rectory Rd, Tivetshall St. Margaret, Norwich, NR15 2EJ

M G M Eagling  
Farmers  
Chestnut Farm Station Rd, Tivetshall St. Margaret, Norwich, NR15 2BA

Woodrow Bros  
Farmers  
Railway Farm, Hale St, Tivetshall St. Margaret, Norwich, NR15 2EG

N.A Chubbock  
Farmers

J R Elmar & Sons  
Farmers  
Lodge Road, Tivetshall St Margaret, Norwich, NR15 2AX

FCC Environment  
Commercial Waste Disposal  
Waste Transfer Station, Station Rd, Tivetshall St. Margaret, Norwich, NR15 2BA

Rix Automatics  
Amusement Parks and Arcades  
Homefields Grove Rd, Tivetshall St. Margaret, Norwich, NR15 2BE

Simpsons Malt Ltd  
Wine Making and Brewing Supplies  
The Maltings Moulton Rd, Tivetshall St. Margaret, Norwich, NR15 2AJ

R S Limousines  
Wedding Cars  
Jasmine Cottage Hale St, Tivetshall St. Margaret, Norwich, NR15 2EG

Waveney's  
Pumps and Pumping Equipment  
Station Rd, Tivetshall St. Margaret, Norwich, NR15 2EB

Flow Kerb  
Concrete Repairs  
The Spinney Grove Rd, Tivetshall St. Margaret, Norwich, NR15 2BE

Transformations Painting & Decorating  
Painters and Decorators  
Homefields Grove Rd, Tivetshall St. Margaret, Norwich, NR15 2BE

Flowers VFP  
Florists  
The Malthouse, Hales St, Tivetshall St. Margaret, Norwich, NR15 2EE

Railway Tavern  
Station Road, Tivetshall St Margaret, Norwich, NR15 2EB

Equipment Beton Ltd  
Concrete Pumping  
Simonds Farmhouse, Tivetshall St. Margaret, Norwich, NR15 2EL

Fresh Web Creations  
Web Design and Development  
Star Gatehouse, Tivetshall St. Margaret, Norwich, NR15 2BW

Total Track Control  
Motor Sports  
6 Thwaites Oak Close, Tivetshall St. Margaret, Norwich, NR15 2AW

Halvergate Village Hall  
Function Hire Services  
Moulton Road, Tivetshall St Margaret, Norwich, NR15 2AJ

Red House Farm Bed & Breakfast  
Bed and Breakfast  
Station Rd, Tivetshall St. Margaret, Norwich, NR15 2DJ

Norfolk Candy Buffet  
Party Planners and Organisers  
6 Thwaites Oak Close, Tivetshall St. Margaret, Norwich, NR15 2AW

Banqueting Hire Service  
Catering Equipment Hire  
Thistledown Farm, Tivetshall St. Margaret, Norwich, NR15 2DL

SD Pat  
Electrical Inspecting and Testing  
7 Thwaites Oak Close, Tivetshall St. Margaret, Norwich, NR15 2AW

Ross Goldsmith Ltd  
Caravan and Car Storage  
Beck Green Farm, Station Road, Norwich, NR15 2BB

Tivetshall St. Mary Sub Post Office  
Post Offices  
Rectory Rd, Tivetshall St. Mary, Norwich, NR15 2AL

The Old Ram  
Ipswich Rd, Tivetshall St. Mary, Norwich, NR15 2DE

R.C Martin  
Garage Services  
Rectory Rd Garage Rectory Rd, Tivetshall St. Mary, Norwich, NR15 2DD

Tivetshall Community Primary School  
Schools and Colleges  
School Rd, Tivetshall St. Mary, Norwich, NR15 2BP

Glover Bros  
Garage Services  
The Workshop Rectory Rd, Tivetshall St. Mary, Norwich, NR15 2DD

Norfolk PAT Testing  
Electrical Inspecting and Testing  
Primrose Cottage Bonds Rd, Tivetshall St. Mary, Norwich, NR15 2BX

Marlborough Dental Laboratory  
Dental Technicians  
Marlborough Bonds Rd, Tivetshall St. Mary, Norwich, NR15 2BX

Advertising and Graphic Designers  
Rosario Cottage Rectory Rd, Tivetshall St. Mary, Norwich, NR15 2AL

C.J Brown  
Painters and Decorators  
Pear Tree Estate, 1, The St, Tivetshall St. Mary, Norwich, NR15 2BU

K.J.W & L.E Gapp  
Mill Green Farm Ram Lane, Tivetshall St. Mary, Norwich, NR15 2DA

Paul Lovett Domestic Appliance Repair Service  
Appliance Repairs  
5 Rectory Rd, Tivetshall St. Mary, Norwich, NR15 2AL

Roger Martins Garage  
Garage Services  
Rectory Road, Tivetshall St Mary, Norwich, NR15 2DD

Green Pastures Development  
Property Development  
Green Pastures, The Street, Tivetshall St. Mary, Norwich, NR15 2BT

Simply Sound  
Sound Equipment Installations  
Primrose Cottage Bonds Rd, Tivetshall St. Mary, Norwich, NR15 2BX

A Reliable Type

Secretarial Services  
Appleyard, Rectory Rd, Tivetshall St. Mary, Norwich, NR15 2AL

Steven Elvin Builders  
Builders  
Sun Court, Rectory Rd, Tivetshall St. Mary, Norwich, NR15 2DD

The Primrose Press  
Printers and Lithographers  
Primrose Cottage Bonds Rd, Tivetshall St. Mary, Norwich, NR15 2B

Scaffwise Ltd  
Scaffolding Erectors  
Turnpike Cottage Ipswich Rd, Tivetshall St. Mary, Norwich, NR15 2DH

Janet Hegarty School of Ballet  
Dancing Schools  
Cottage Rectory Rd, Tivetshall St. Mary, Norwich, NR15 2AL

Oil Fired Boiler Services  
Oil Fired Heating Equipment  
School Rd, Tivetshall St. Mary, Norwich, NR15 2BP

Sadler Traditional Building  
Builders  
The Cottage Ram Lane, Norwich, NR15 2DA